

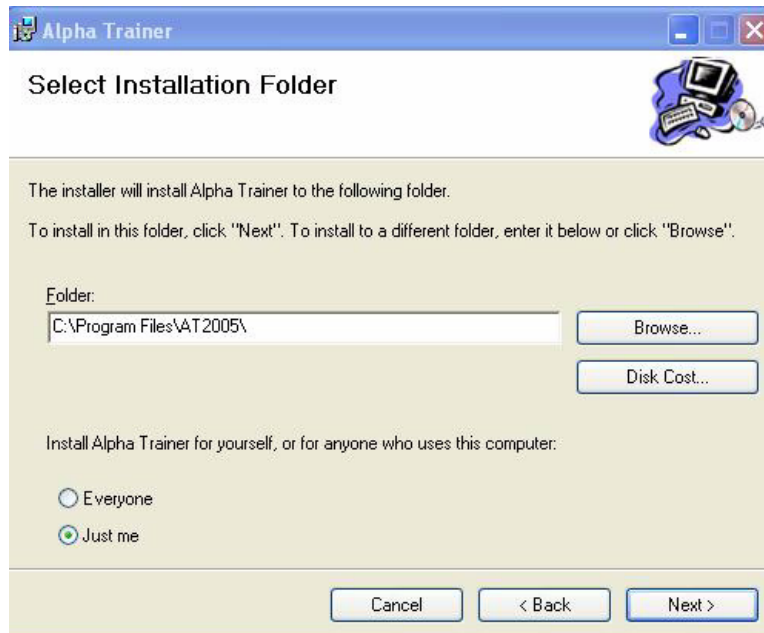
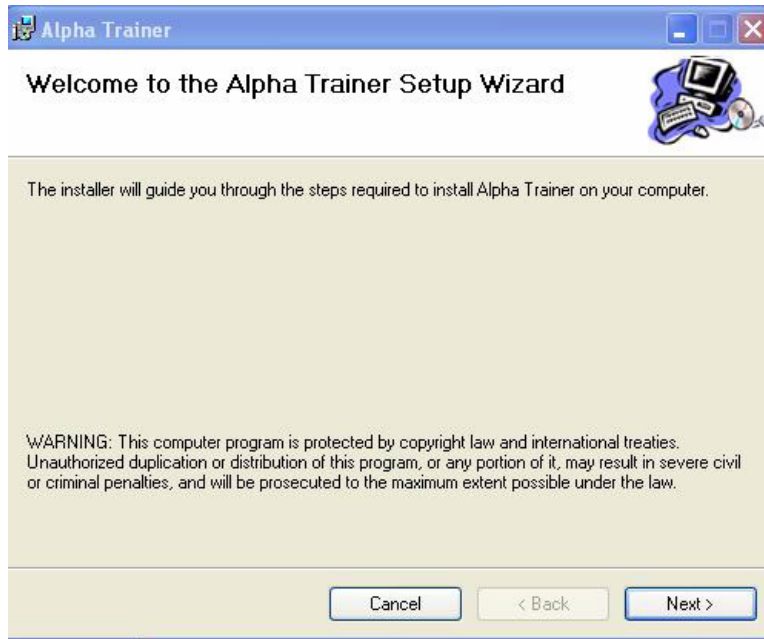
# Installing AlphaTrainer 2D

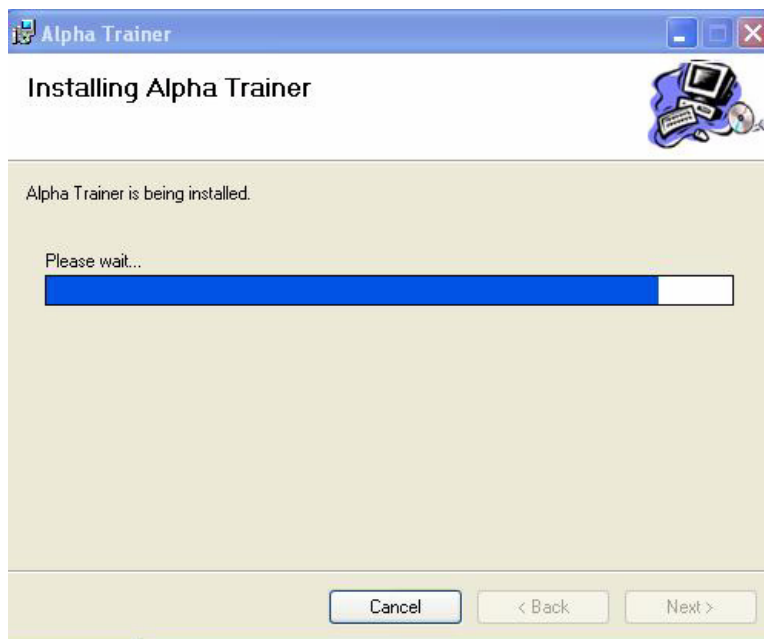
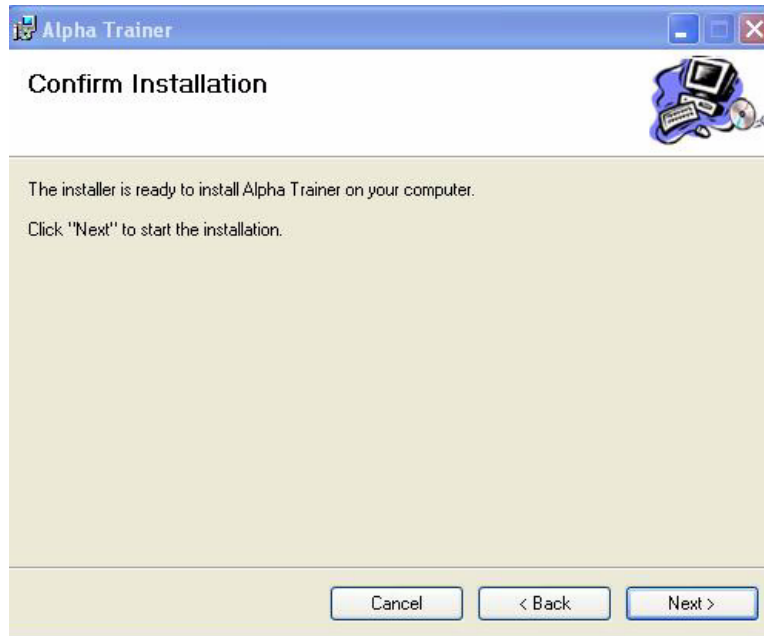
## NOTICE

AlphaTrainer 2D is only available for Windows.

### Introduction

The downloaded file is named "ATsim501.zip". Extract this file into a convenient folder on the hard drive. "Setup.exe" is a self-extracting file. Launch this file to load all the necessary information. The following four images are screen shots of the setup wizard's user prompts:





Once installation is complete, the following icon appears on the desktop:



---

**Microsoft .NET Framework**

Prior to running AT2D, the computer must also contain Microsoft .NET framework v 2.0. If necessary, search the Download Center at [www.microsoft.com](http://www.microsoft.com) and download the latest version. Follow instructions to install.

---

**Selecting Operation Manuever AT2D**

The aerodynamic vectors for lift, drag, thrust, weight, and velocity are shown as well as their numeric values. Angle of attack is shown on a multi-colored “protractor” similar to that on the original AlphaTrainer model. This system works like a video tape player and is driven by data saved from X-Plane simulator flights. Select one of the following 15 maneuvers:

1. Normal Departure
2. Engine Failure on Departure
3. Normal Landing
4. Go Around
5. Power-On Stall (Clean)
6. Power-On Stall (One Notch Flaps)
7. Power-Off Stall in Level Flight (Clean)
8. Extended Power-Of Stall in Level Flight(Clean)
9. 65% Power-On Stall
10. Power-Off Stall in Descent (Clean)
11. Power-Off Stall in Descent (One Notch Flaps)
12. Stall in a Dive
13. Low Speed Accelerated Stall (Clean)
14. Maneuvering in Slow Flight
15. Wind Shear Escape on Landing



---

**User Controls**

Use the following controls listed in the following chart to run the simulation:

>	Slow forward
>>	Forward normal speed
>>>	Fast forward
	Go to end
...	Similar for reverse
	Pause
Vectors ON/OFF	Turns the arrows on and off.
P/IFP SYNC ON	Retains the pilot's view in line with the instantaneous flight path (IFP).
P/IFP SYNC OFF	Allows user to aim the pilot's view using the Pilot View slider
EXIT	Stops the program

---

**AlphaTrainer  
History**

Tom Shefchunas, corporate jet pilot and CFI, invented a laminated cardboard side view of an airplane that could be used to demonstrate the basic idea of angle of attack (alpha). He did this because he found that many pilots lacked that fundamental understanding. Mr. Shefchunas owns U.S. Patent Number 5,607,307 which covers his original model and all of the computer versions and improvements. AlphaTrainer is patented to protect the rights of the originator who has invested his own funds in the project. Chuck Bodeen and Tom Wilson have donated their time to the same cause Shefchunas started with: to help save the lives of pilots by making them more aware of the serious implications of high angle of attack.